



scannexus

How to become a Certified User at Scannexus

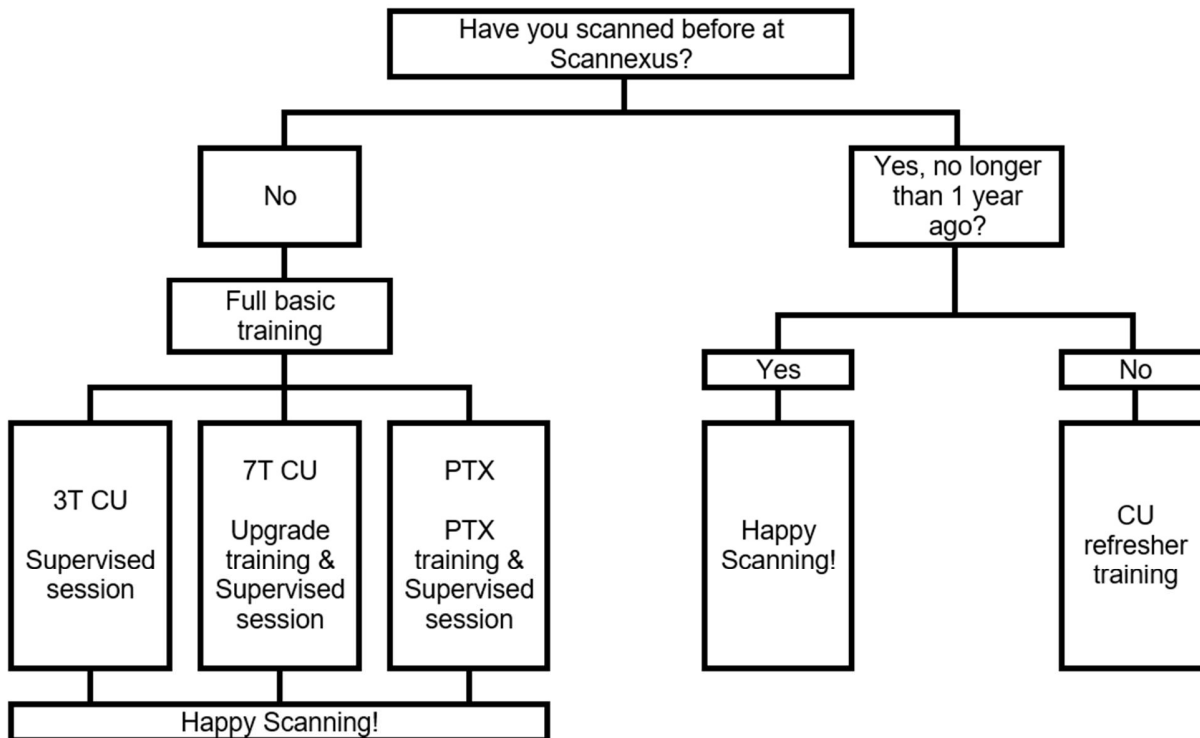
Version: 1.6

Date Last Modified: 21-11-2022

1 ORGANISATION

The first step in becoming a certified user (CU) is to have a project and signed contract with Scannexus. Once you have a contract in place, you can apply for training.

Note! (Bachelor/Master) students are not allowed to become a CU!



Contact Scannexus lab administrator: scanlabs@scannexus.nl or request a training via the Service desk <https://jira.scannexus.nl/servicedesk/customer/portal/>

We aim to give a full CU training once every month. The training takes place in the Scannexus MRI facility (Oxfordlaan 55) in groups of 2 to 5 trainees in either Dutch or English. Three sessions are needed to complete the full basic CU training (3T training). Each session will take up to 4 hours. After completion of the basic training, it is possible to follow the 7T upgrade training or the PTX training.

The final part of the training are the supervised sessions, which take place during the first measurement(s) of your study. During the supervised session(s) your skills will be evaluated to see if you are able to work safely and know how to operate the scanner.

2 TRAINING

2.1 FULL BASIC CU TRAINING

If you have no previous experience with scanning at Scannexus you will have to complete the full Basic CU training. The training consists of the online GUFIT training (see "2.3 Magnet Safety Training" for more information) and three onsite sessions. The training will start when there are enough applicants. The period between completion of the training and the real project measurements should be kept as small as possible.

FULL BASIC CU TRAINING

1. Session 1 – Safety & Screening
2. Session 2 – Rules & Software
3. Session 3 – Practice scanning

CU 3T

3T supervised session

CU 7T

7T Upgrade training & supervised session

PTX

PTX training & supervised session

Learning objectives of the trainings are:

- Knowing how to work safely and;
- How to perform a successful MRI measurement.

2.2 7T UPGRADE TRAINING

To become a certified user for 7T, you will need a 7T upgrade training. The focus will lie on how to act upon the differences in scanning in higher field strength and the accompanying steps to be taken, like shimming. It will consist of one session of 2-3 hours.

After the group session you will have the opportunity to practice on a phantom to get prepared for your first supervised scan session. It is recommended to create your own workflow of scanning and note down all separate steps.

2.3 PTX TRAINING

The PTX training is an individual and project based training. During the training, the scan procedure in Parallel Transmission mode will be explained and trained. It is recommended to create your own workflow of scanning and note down all separate steps.

2.4 MAGNET SAFETY TRAINING

If you are a student or other user who will not be scanning but will be present in the console room or help with the preparation of subjects, you will need to complete the Magnet Safety training. It will consist of an online GEFI training, watching the Siemens safety video and a 45 minute tour at our facility to show the emergency knobs. With this training you can assist CU's with their studies in the scannerlab.

3 RESPONSIBILITIES

With the completion of the full CU Training , you have to confirm that you know how to operate the scanner and that you are aware of the risks and safety issues related to MRI and Scannexus-specific procedures. You will therefore be asked to sign the Certified User Agreement of the scanner you are trained for, which will also be signed by a member of the Support Staff. The agreement and accompanying checklist can be found in appendix 2 of the Scannexus Guidelines. As a CU, you are responsible for your own measurements/data and the safety of yourself and the subjects.

If you complete the Magnet Safety Training, you will sign an agreement in which you declare to have knowledge of MR safety.

More information about our regulations can be found in the Scannexus Guidelines (<http://scannexus.nl/information/documentation>).